

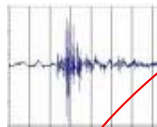


## **CAE Spotlight**

**Janice Harissis**  
**VP, Director Audit Services**  
**Texas Instruments**

# A History of Innovation

Innovation in signal processing has been *the* technology thread throughout TI's 80+ year history.



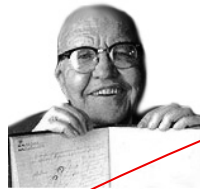
**1930s**

Revolutionizes oil exploration by measuring reflected signals



**1940s**

Applies signal measurement to magnetic anomaly detection



**1950s**

Invents the integrated circuit



**1960s**

Invents the handheld calculator



**1970s**

Applies signal processing to consumer products



**1980s**

Introduces single-chip digital signal processor



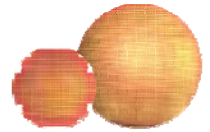
**1990s**

Creates first apps processor for multi-media cell phones



**2000s**

Introduces world's fastest analog-to-digital converter and lowest-power DC-DC converter



**2010s**

Industry's first 300mm analog wafer fab

# TI's Global Footprint

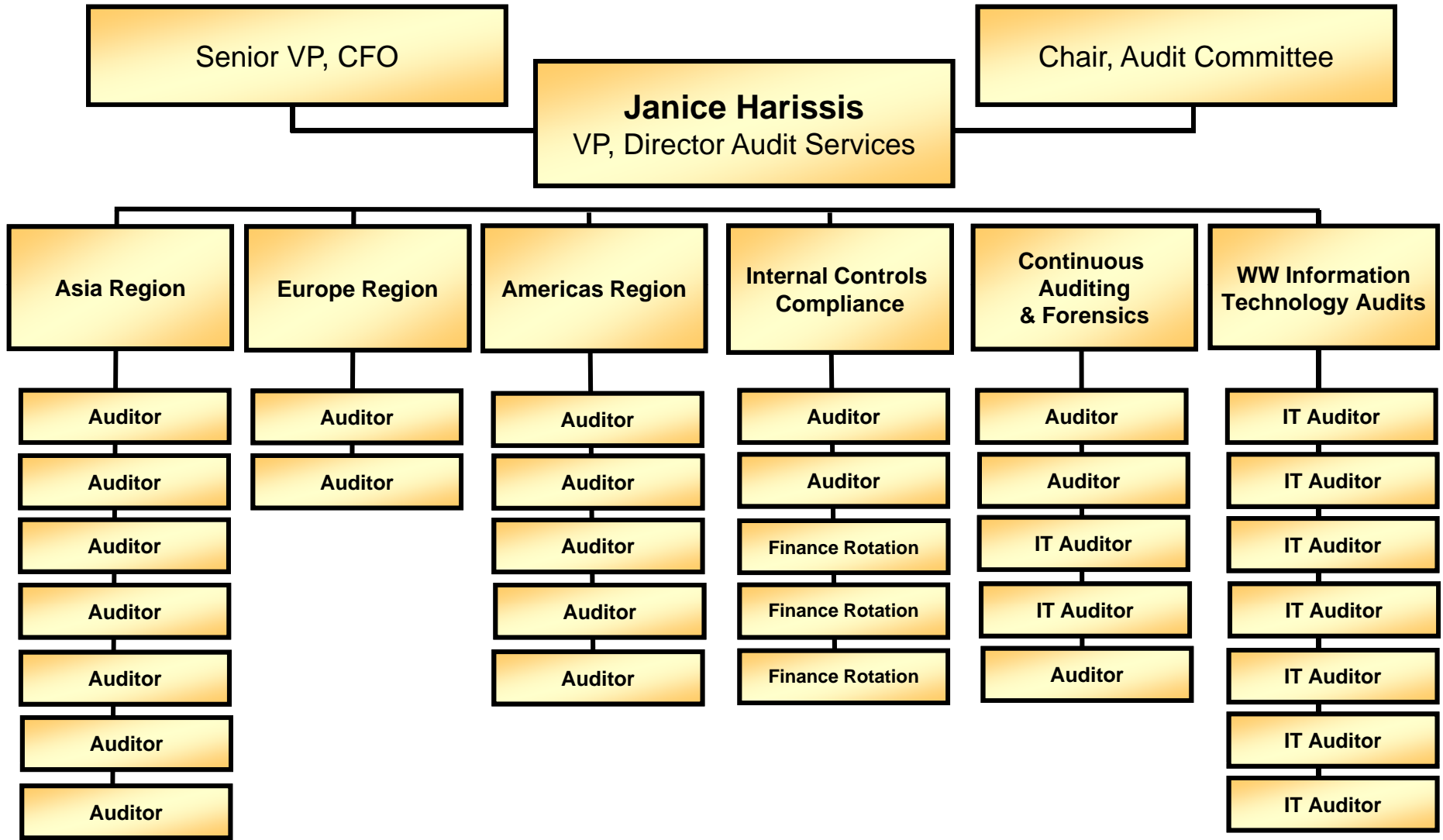
TI Revenue 2010 – 13.97 billion

- Businesses are managed globally
- Maintain a standardized set of Policies and Procedures
- Mostly global systems
  - A single instance of SAP

TI has manufacturing, design or sales in >30 countries, serving >80K customers

- **Worldwide manufacturing puts TI products and service closer to you**
- TI design, sales and applications: support deployed closer to our customers gets you to market faster

# Audit Services



# Best Practices

- Relationship – perceived as a value partner
  - With management
  - With audit customers
  - With external auditors
  - Other support functions
- Interaction with the Audit Committee
- Staff Development
  - Guest auditors
  - Placement of auditors within TI
  - College rotation program
- Audit Planning
  - Questionnaire
  - Individual interviews
- Continuous Audit Program
- IT Audit
  - Staff
  - Integrated approach
- Early Involvement
- Internal Control Testing
  - Administered by audit department
  - Controller's Checklist
- Accounting Quality Review
- Audit Issue follow-up